

WARRIORS



CENTRAL VALLEY  
SCHOOL DISTRICT

WARRIORS

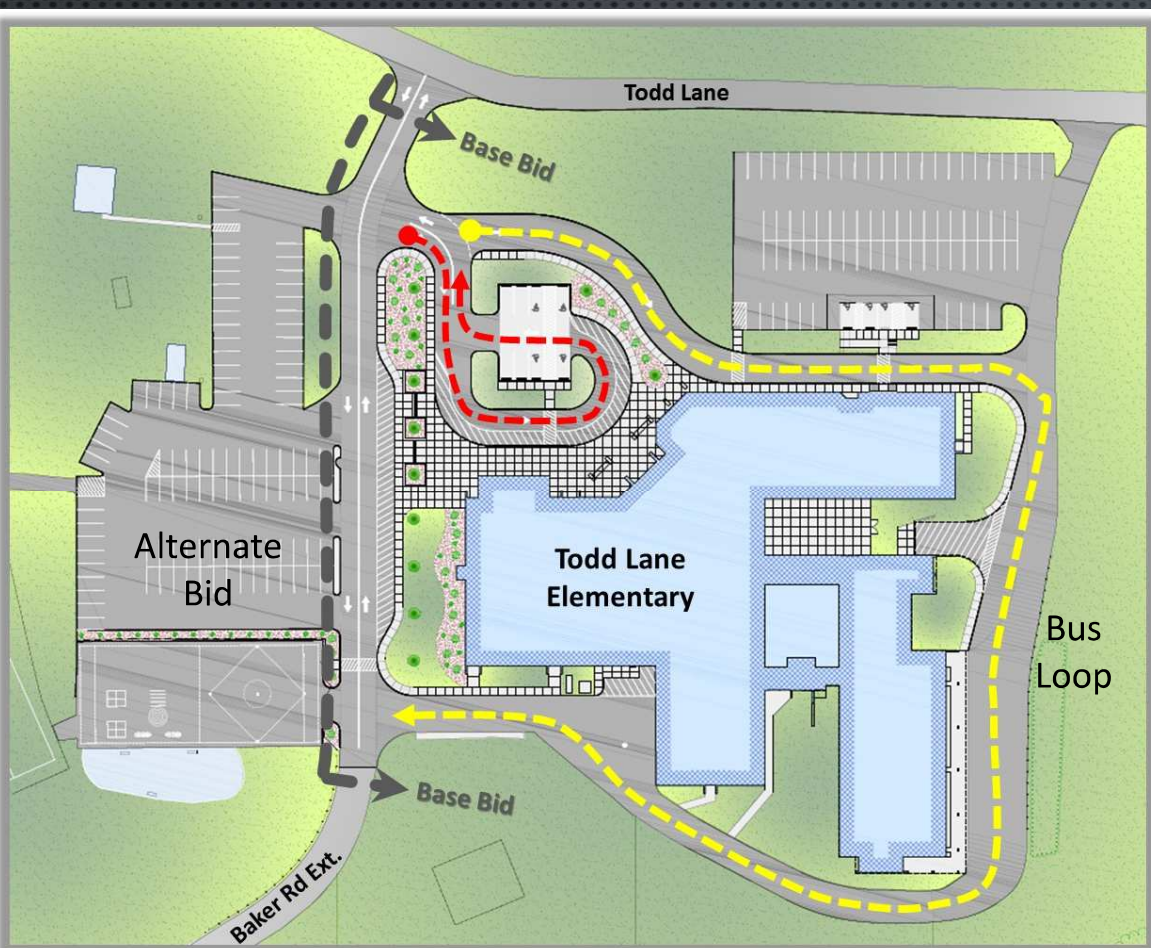
## COMMUNITY MEETING

### TODD LANE ELEMENTARY SCHOOL ADDITIONS & RENOVATIONS

May 18, 2017



*Providing a Client-Oriented Approach to Architecture*  
Crabtree, Rohrbaugh & Associates - Architects



## SITE DESIGN

Improved Circulation

Traffic / Bus / Parent

Pedestrian

Safety

Concrete & Asphalt Paving

Upgrades/Replacement

Underground Storm Water

Retention

Aesthetic Improvements





## MAIN ENTRANCE IMPROVEMENTS

- Create “legible” building entry
- Security & supervision
- Organization & flow
- New identity
  - Canopies & facade elements
  - Plaza design

Cafeteria / Commons  
L.G.I. / Student Activity  
Typical Classrooms

# FLOOR PLANS

First Floor Plan

Lower Level Floor Plan



# FLOOR PLANS

## Second Floor Plan





## CAFETERIA /COMMONS

- 3,650 Sq. Ft. (seat 300+ people)
- Improved circulation / flow
- Spatial characteristics:
  - High ceiling / acoustics
  - Natural light
  - Quality finishes / materials
- Multiple functions
  - Large Group Instruction
  - Student Activity



## CAFETERIA /COMMONS





## LARGE GROUP INSTRUCTION

- Learning Stairs: Seats 150+
- Student Activity
- Multiple functions / flexibility
- Spaces connect (physically & programmatically)
- Spatial characteristics:
  - Quality finishes / materials
  - Technology
  - Natural light







## LARGE GROUP INSTRUCTION

## LARGE GROUP INSTRUCTION



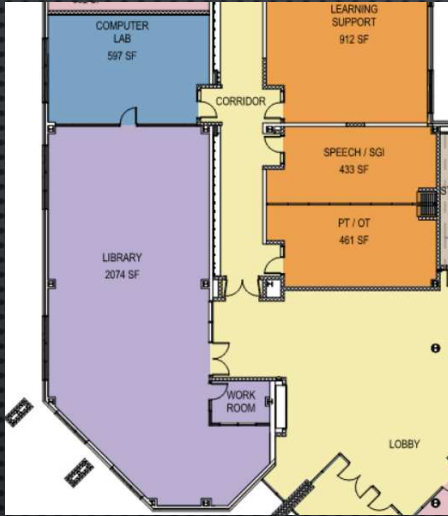




## TYPICAL CLASSROOMS







## LIBRARY

- Flexibility (Furnishings & Instruction)
- Digital Technology
- Professional Development iPad / Computer Lab



## EDUCATIONAL ENHANCEMENTS

### Technology Education

- STEM Space / Hands On
- Computer Applications

### Music Room

- Instrument/Rehearsal Space

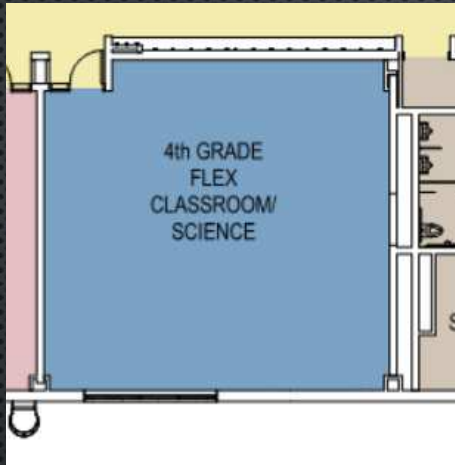
### Art Room

- Open / Flexible
- Kiln

### Student Activity Area

- Common Collaboration Area for Specialties

## EDUCATIONAL ENHANCEMENTS

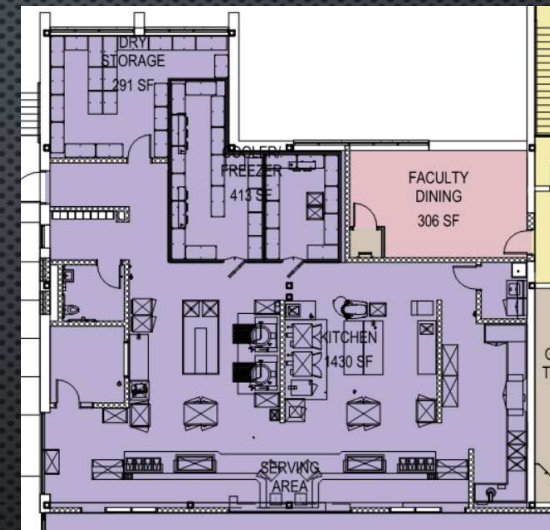
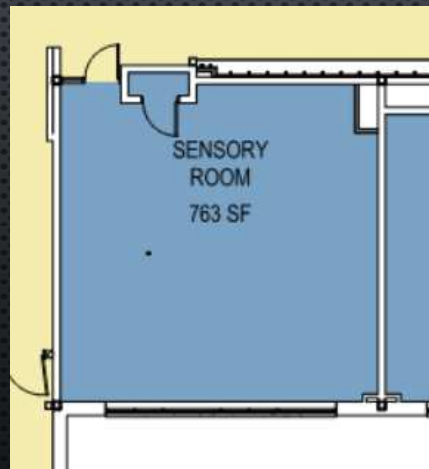


### Science

- One Room per Grade
- Equipped for Curriculum
- Can serve as Regular Classroom, if needed

### Special Education

- Variety of Quantities/Types
- Includes Learning Support, Resource & Sensory Rooms



### Kitchen

- Converted Cafeteria
- Full-service, large capacity





## **BUILDING IMPROVEMENTS**

### **New HVAC System**

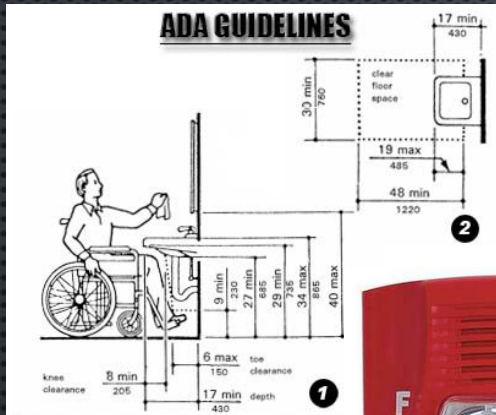
- **Variable Air Volume (VAV)**
  - **Air Conditioning throughout**
- ### **Complete Lighting Replacement**
- **Highly-Efficient LED Fixtures**
  - **Flexible Control**

### **New Plumbing Fixtures**

- **Low Water Consumption**

### **New Windows & Doors**

- **Energy-Efficient**
- **Operable Units in Classrooms**



## BUILDING IMPROVEMENTS

### Life Safety & Code Upgrades

- Handicap-Compliant Design
- Automatic Fire Suppression (Sprinkler System) throughout
- Emergency Generator
- New Fire Alarm System
- Security Systems:
  - Secure Access (card readers)
  - Perimeter Protection
  - Camera System (interior & exterior)
  - Motion Detection





## **PROJECT BUDGET**

**Bids Received May 11, 2017**

**General Construction**

**Plumbing Construction**

**HVAC Construction**

**Electrical Construction**

**Board / Administration / Design Team  
currently evaluating bids vs budget**

**May implement value engineering  
process**

	January					February					March					April					May					June					July					August				
Week Beginning	2	9	16	23	30	6	13	20	27	6	13	20	27	3	10	17	24	1	8	15	22	29	5	12	19	26	3	10	17	24	31	7	14	21	28					
<b>Design Development</b>																																								
Land Development - Center Twp.																																								
Site Plan - NPDES Permit (county)																																								
Faculty/Staff Meetings																																								
Final DD Package																																								
School Board Retreat																																								
PlanCon D & E - PDE																																								
<b>Construction Documents</b>																																								
50% CD Check Set																																								
95% CD Check Set/Code Set																																								
<b>QA / QC</b>																																								
Final Permitting																																								
Final Coordination																																								
Printing & Advertising																																								
<b>Bidding</b>																																								
PlanCon F - School Board																																								
Bid Release																																								
PlanCon F PDE Review																																								
Pre-Bid Meeting																																								
Bid Opening																																								
Award Contracts																																								
<b>Post-Bid</b>																																								
Post-Bid Submission Review																																								
PlanCon G - School Board																																								
Notice to Proceed																																								
<b>Construction</b>																																								
Todd Lane ES																																								
Phase 1 Stadium & Tennis Courts																																								
* In lieu of or in addition to this regularly-scheduled meeting date, a special meeting date may be needed to provide additional time for board members to evaluate available data and vote. School Board shall authorize the award of contracts, contingent upon approval of contractor qualifications through subsequent, thorough vetting process by CRA and District Solicitor.																																								

# CONSTRUCTION TIMELINE

Bids Received

May 11, 2017

Review & Award Contracts

Mid-May

Notice to Proceed (Start Date)

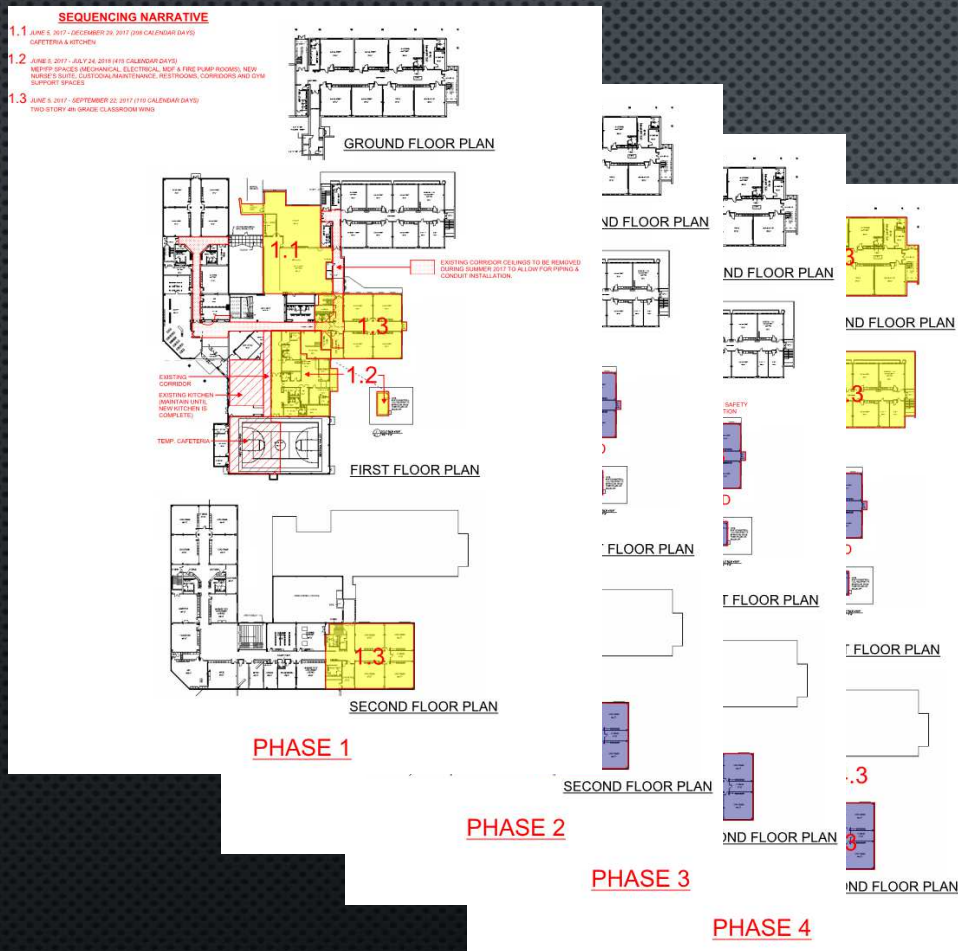
Early June

Project Completion

415 Calendar Days

Estimated Mid July 2018





## BUILDING PHASING

- Work areas incrementally turned over for various time durations (calendar days)
- Sequential completion of phases requires occupants to relocate and make use of temporary spaces
- Final schedule will be developed after contracts are awarded; requires District input



## SAFETY MEASURES & PRECAUTIONS

### Safety: PRIORITY #1

- Separation of occupants
- Contractor responsibilities
- Safety measures:
  - Background checks
  - Temporary barriers
  - Egress
  - Fencing
- Asbestos abatement

Air Quality  
Disruptions





## SAFETY MEASURES & PRECAUTIONS

# Safety

## Air Quality

- **Odor control**
- **Sealed barriers**
- **Indoor Air Quality (AIQ) testing**
  - **Baseline testing**
  - **Incremental testing/verification**
  - **Complete before/after each Phase**
- **Control site dust**

## Disruptions





## SAFETY MEASURES & PRECAUTIONS

Safety

Air Quality

**Disruptions**

- Noise & attempt to minimize
- Utility service interruptions
- Work in Progress conditions



## TEMPORARY CONDITIONS FOR LONG-TERM BENEFITS

- Improved Safety and Security
- New Educational Environments
- New Site Design
- New Interior Finishes
- New Building Systems



WARRIORS



CENTRAL VALLEY  
SCHOOL DISTRICT

WARRIORS



*Providing a Client-Oriented Approach to Architecture*  
**Crabtree, Rohrbaugh & Associates - Architects**