



**CENTRAL VALLEY**  
SCHOOL DISTRICT

**District-Wide Facility Study Update**  
**August 20, 2015**

CR

*Providing a Client Oriented Approach to Architecture*

Crabtree, Rohrbaugh & Associates, Architects

## Create S.M.A.R.T. Goals



## Agenda

---

- Study Update
- Educational Programming
- Building & Site Evaluations
- Schedule

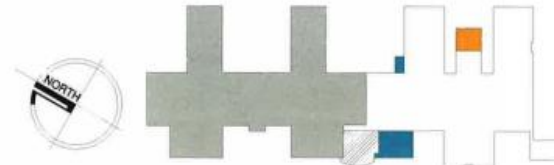


## Process - Overall

- Maintain focus on overall goals
- Maintain communication
- Allow time for revision and idea exploration
- District & Community own the process

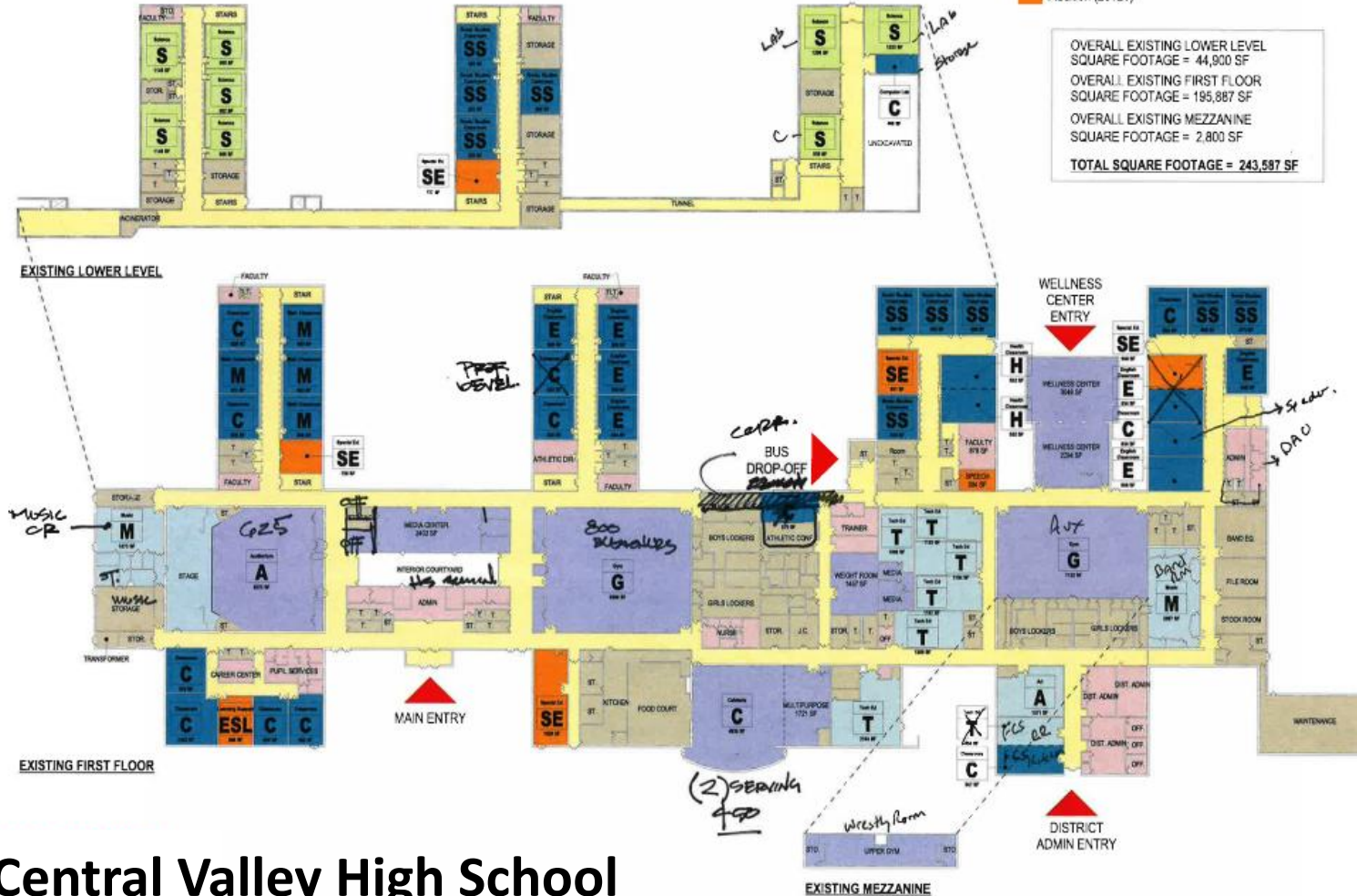
## Legend

Admin	Computer Lab	Kitchen	Music	Storage
Art	Corridor	Learning Support	Social Studies Classroom	Tech Ed
Auditorium	English Classroom	Library	Special Ed.	Toilet
Cafeteria	Gym	Locker	Stage	Utility
Classroom	Health Classroom	Math Classroom		



■ Original Construction (1963)    □ Addition (1967)  
 ■ Addition (1991)    □ Addition (2006)  
 ■ Addition (2012?)

OVERALL EXISTING LOWER LEVEL  
 SQUARE FOOTAGE = 44,900 SF  
 OVERALL EXISTING FIRST FLOOR  
 SQUARE FOOTAGE = 195,887 SF  
 OVERALL EXISTING MEZZANINE  
 SQUARE FOOTAGE = 2,800 SF  
**TOTAL SQUARE FOOTAGE = 243,587 SF**



# Educational Program

## DISCOVERY PHASE

- July 30, 2015 Administrative Meeting
- Establish current use of space for all facilities
- Discussed how each building has evolved
- Building organizational issues
- Site issues; athletics, parking, traffic

## VISIONING -

### Establishing Guiding Principles

- What is your Educational Model for the Future
- What standards are important to implement
- 21<sup>st</sup> Century Learning Environments
- Equity

## DESIGN -

### Translating Goals into ideas and strategies for facilities

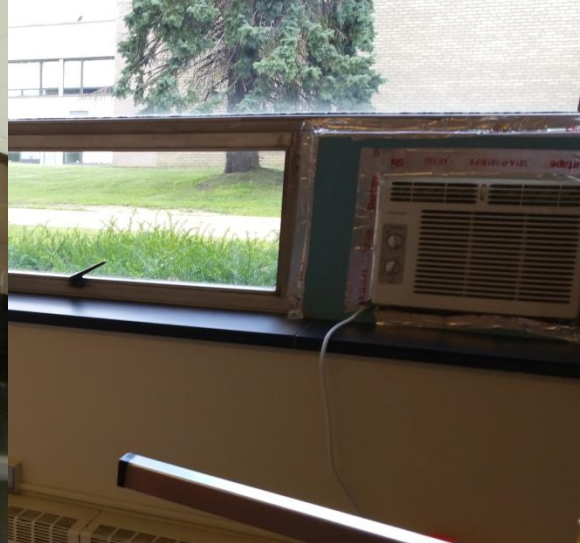
- Collaboration
- Building Organization
- Floor plans , Furniture & equipment layouts

## Central Valley High School



# Educational Program

- August 20, 2015 Administrative Meeting
  - Site Athletics
    - Current Use of Fields / Scheduling
  - Transportation
    - Bus Arrival / Departure / Safety
    - Delivery Conflicts
    - Parking Capacity
  - Food Service
    - Establish current delivery methods / concerns
  - Special Education
    - Verification of spaces





# Building & Site Evaluations

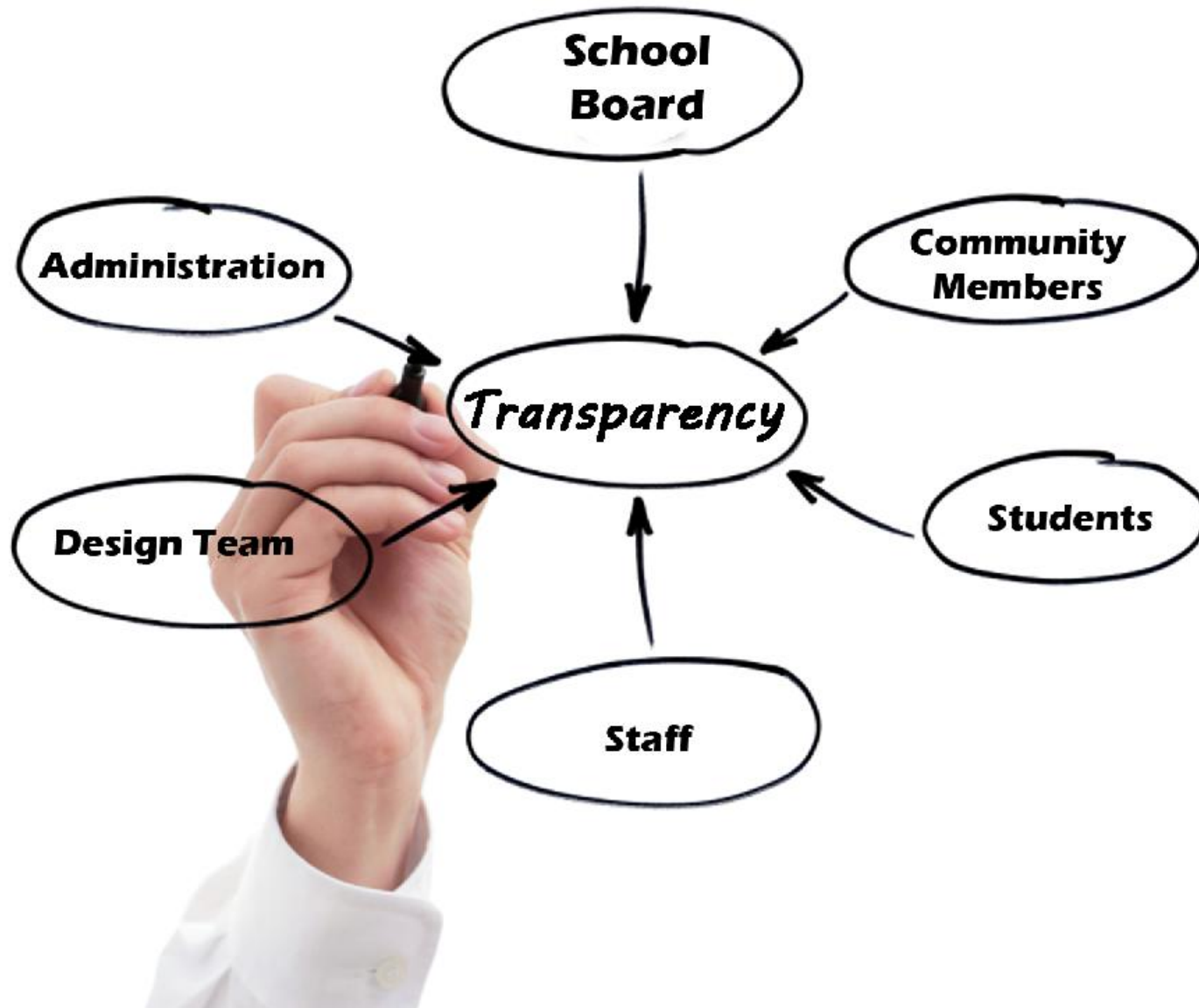
- Preliminary Building Assessments

- **Draft** reports under review
- All building systems, technology & site
- Architectural Building infrastructure, exterior & interior

## Evaluations underway

- Preliminary recommendations; repair, replace, defer
- Building code compliance / ADA
- Life Cycle Cost Analysis
- **Define Desired vs. Required**



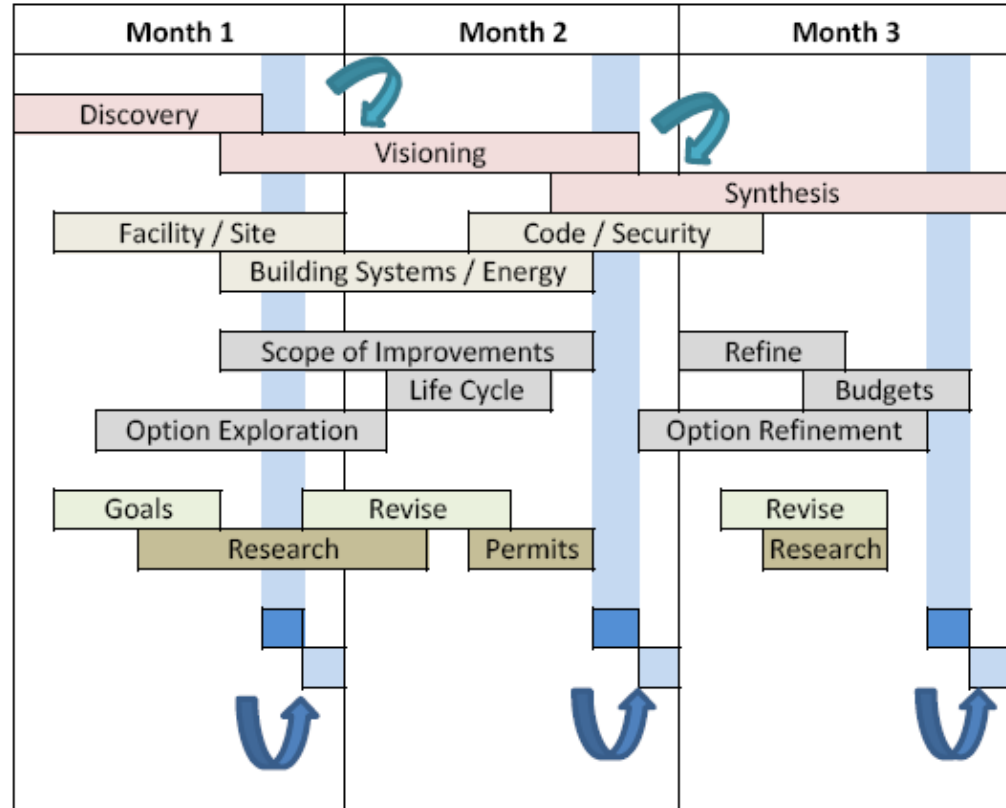
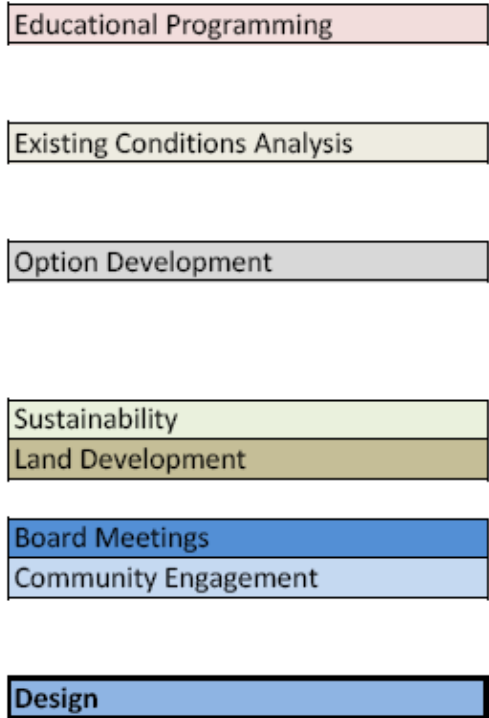


## Board and Committee Structure

- *Transparency*: Easy Access to Process
- Define Committee Structure & Purpose
- Establish Community Partnerships
- Focus on Education / Fiscal Responsibility & avoid miscommunications

# Schedule

## TASKS



## Upcoming Goals

- Finalize Building and Site Assessments
- Continue educational program discussion
- Preliminary Improvements
- **Board Workshop Sept 14/15**  
Establish understanding of current facility conditions  
Board input to develop direction
- Committee Meeting – Sept/Oct.





**CENTRAL VALLEY**  
SCHOOL DISTRICT

**Questions ?**

**CR**

*Providing a Client Oriented Approach to Architecture*

Crabtree, Rohrbaugh & Associates, Architects