



CENTRAL VALLEY
SCHOOL DISTRICT

Board Meeting

Facility Study Update

October 19, 2015

CR

Providing a Client Oriented Approach to Architecture

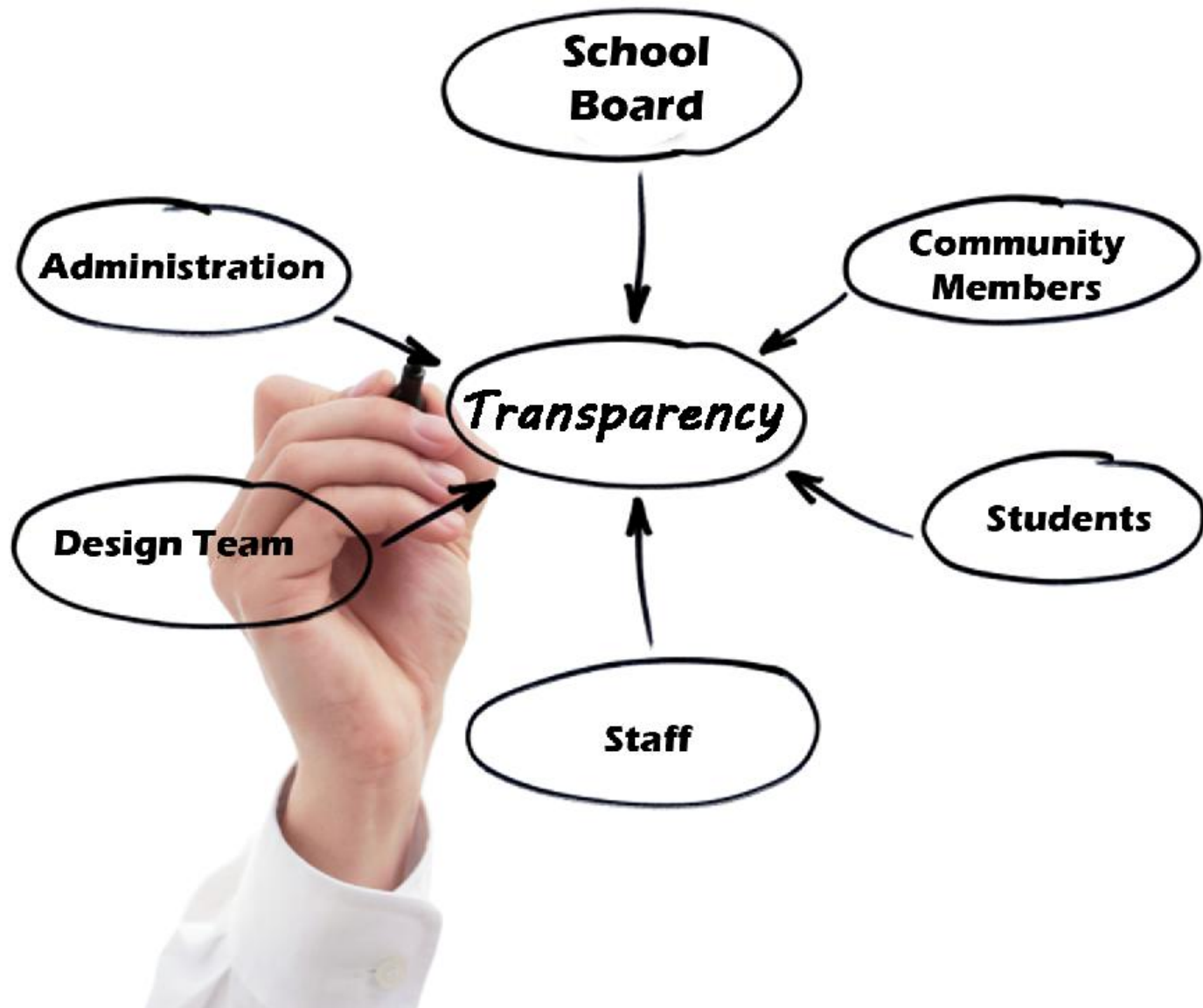
Crabtree, Rohrbaugh & Associates, Architects

Agenda



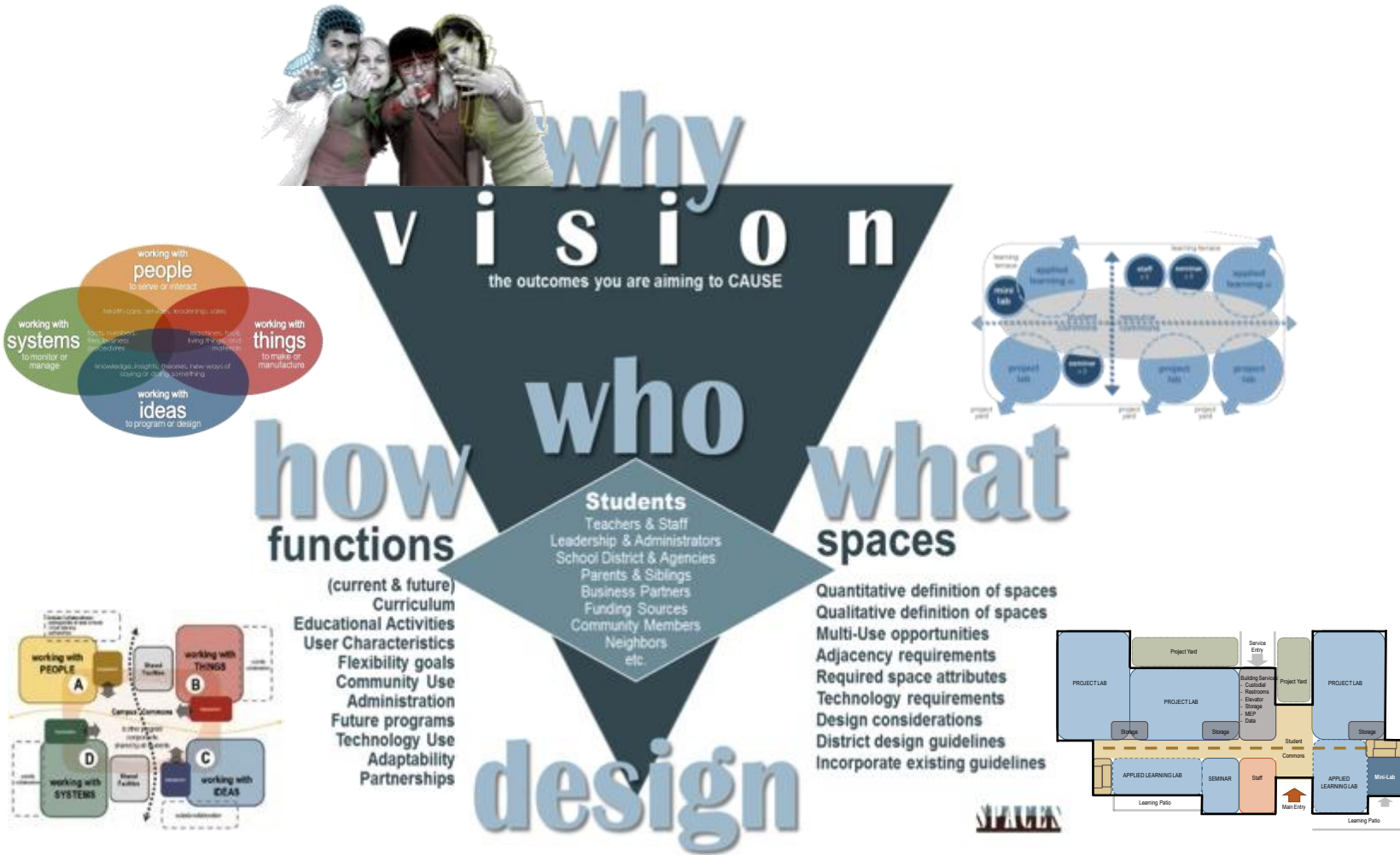
- Community Engagement Team
- Educational Planning
- Preliminary Reports:
 - Architectural Assessments
 - Building Systems Cost Range
- Guiding Principles
- Next Step.....

Community Engagement Team

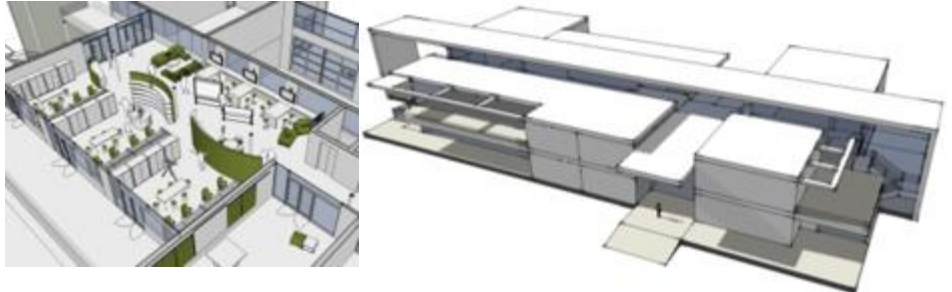


- October 6, 2015 Presentation
 - Reviewed Structure & Purpose
 - Reviewed Work performed to date
 - Discussed Aspects / Goals of a Study
 - Reviewed Process
- Establish Community Partnerships
- Ensure Accurate and Timely Information is shared

Educational Planning



- **DISCOVERY** - Fine-tuning the process & understanding your “givens”
 - Program, schedule & plan reviews
 - Information gathering
- **VISIONING** - Establishing the “Big Idea” and Guiding Principles
 - Vision for the Future – What is your Educational Model
 - Goals & Guiding Principles
- **SYNTHESIS** - Translating Goals into ideas and strategies for facilities
 - Updates to Educational Specifications
 - Program & planning diagrams
- **PRE-DESIGN** - Collaborating to translate your vision into reality
 - Floor plans
 - Aesthetic / Character studies
 - Furniture & equipment layouts



Educational Planning

What has been done so far...

- Visioning Kick-off meetings
- Planning session with Administrative Team
- Information gathering, current operations

Common to explore...

- Space challenges affect learning opportunities
- More collaboration is desired, difficult in current buildings
- Important to connect students and teachers (relationships)
- Students want more hands-on experiences
- Recognition that learning also occurs off-campus
- Variety is key, there is no single approach to teaching/learning



transparency/views



health & fitness



art: creative space



unstructured space



tinkering space

students in
their favorite
spaces...

Educational Planning

Environments that support are:

- Collaborative
- Comfortable
- Safe
- Flexible
- Colorful
- Technology Rich
- Transparent
- Connected
- Accessible
- Inspiring
- Day lit



transparency/views

Marysville Getchell High School Campus DLR Group



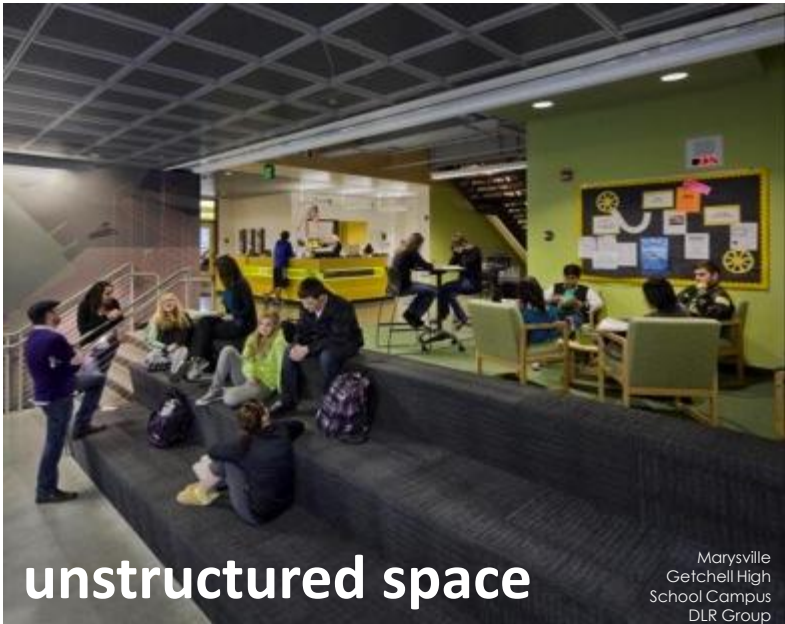
health & fitness

Health & Wellness Center, FSU



art/tinkering spaces

High Tech High David Stephen



unstructured space

Marysville Getchell High School Campus DLR Group



collaborative spaces

Perspectives Charter School Perkins+Will

... space matters!

Preliminary Reports

- Architectural Assessments
 - Interior Environment; Finishes, Casework.....
 - Building Envelope; Roofing, Windows, Doors
 - Coordination of MEP System Recommendations
- Building Systems Cost Range
 - Establish Baseline of Costs
 - Understand Expectations
 - Department of Education “ Current Construction Standards”
 - 20 Year Reimbursement Cycle
 - Building Code Compliance



Preliminary Reports



- Building Systems Cost Range
 - Baseline of Costs AT STUDY LEVEL
 - Mechanical System (HVAC) \$28 - 32 /SF
 - Electrical Systems \$13 - 15 /SF
 - Technology Systems \$8 - 12 /SF
 - Plumbing Systems \$8 - 10 /SF
 - Fire Protection \$3 - 5 / SF
- FACTORS: System Selection, Budget, Scope, Other

Guiding Principles

Start Thinking....



What is important to the Board?
Comprehensive vs. Limited Improvements ?

Short Term vs. Long Term Solutions
Fiscal Responsibility

Next Step

- Begin Enrollment & Building Capacity Analysis
- Continue Educational Program Planning
 - Right Sizing Spaces / Equity
 - 21st Century / Collaborative Spaces
 - Other ?
- Assemble Comprehensive Improvement Costs
- Discuss Short Term / Long Term Goals
- ***Establish Guiding Principles for Decision Making***





CENTRAL VALLEY
SCHOOL DISTRICT

Questions ?

CR

Providing a Client Oriented Approach to Architecture

Crabtree, Rohrbaugh & Associates, Architects