



CENTRAL VALLEY
SCHOOL DISTRICT

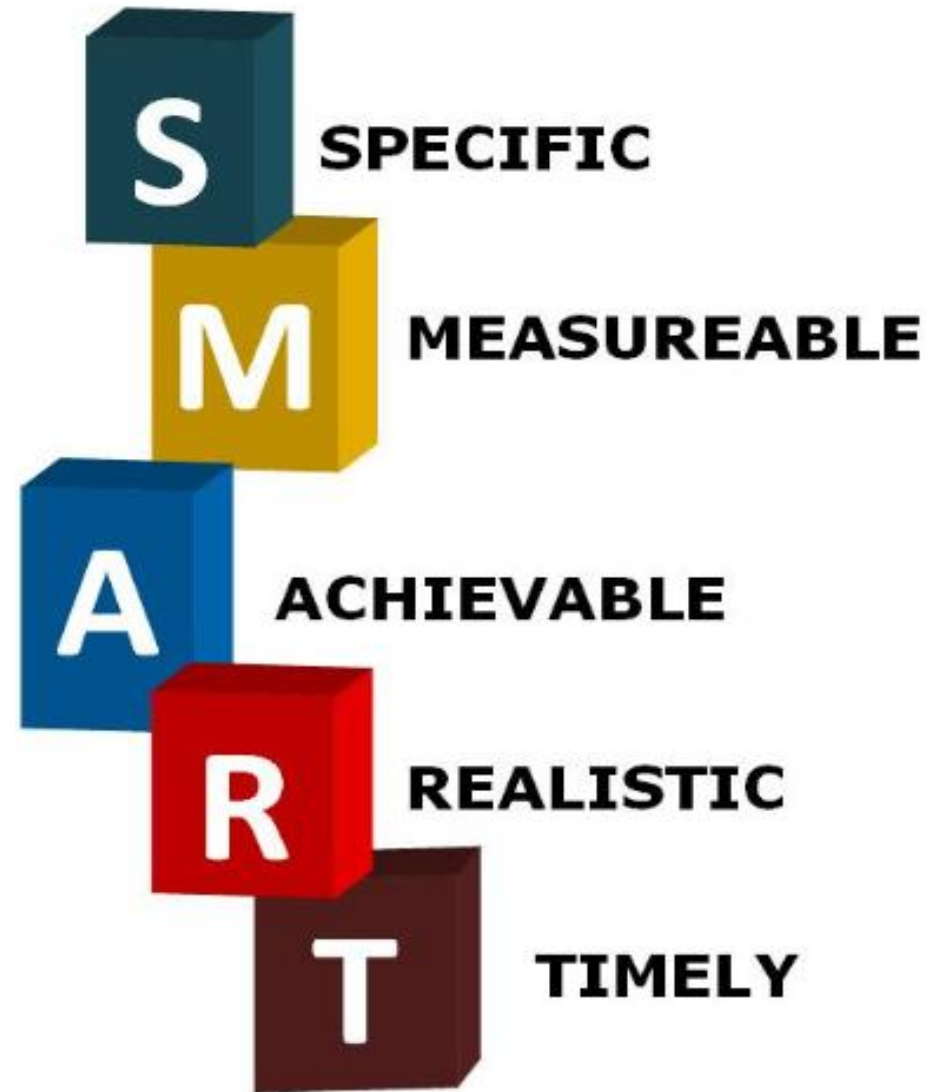
District-Wide Facility Study Update
June 18, 2015

CR

Providing a Client Oriented Approach to Architecture

Crabtree, Rohrbaugh & Associates, Architects

Create S.M.A.R.T. Goals



Agenda

- Process
- Educational Programming
- Demographics / Capacity Analysis
- **Building & Site Evaluations**
- Discuss Committee Structure
- Schedule



Process - Overall

- Maintain focus on overall goals
- Maintain communication
- Allow time for revision and idea exploration
- District & Community own the process

CENTRAL VALLEY SCHOOL DISTRICT

CRABTREE, ROHRBAUGH & ASSOCIATES

Project Team

John A. Beddia, AIA, LEED AP
Role: Principal in Charge

Jeff Straub, AIA, LEED AP BD+C, CPETED
Role: Project Architect

Randy Davis
Role: Director of Marketing &
Client Relations

Scott Vencil
Role: Education Planner

Tracy Rohrbaugh, Allied IIDA
Role: Director of Interior Design

Danette M. Quave
Role: Interior Design Project Manager

Brian Kilgus, LEED AP
Role: QA / Cost Estimator

TOWER ENGINEERING

MEP & Technology

James Kosinski, PE, LEED AP
Role: Senior Project Manager

Thomas J. Gorski, PE, LEED AP
Role: Mechanical Engineer

John West, PE
Role: Electrical Engineer

Michael Plummer, PE
Role: Plumbing Engineer

KEYSTONE STRUCTURAL

Structural Engineering

Anthony L. Moscollic, PE
Role: President/Project Manager

MCFARLAND KISTLER ASSOCIATES

Foodservice

Kenneth M. Kistler
Role: Foodservice Project Manager

SLEIGHTER ENGINEERING

Site/Civil Engineering

Robert W. Sleighter, PE
Role: President/ Project Manager

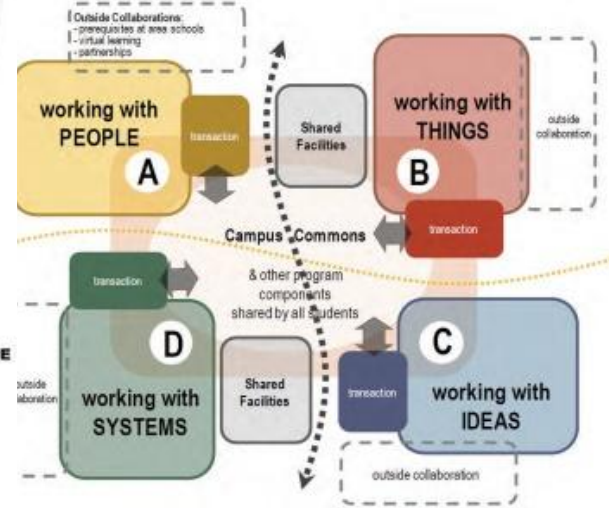
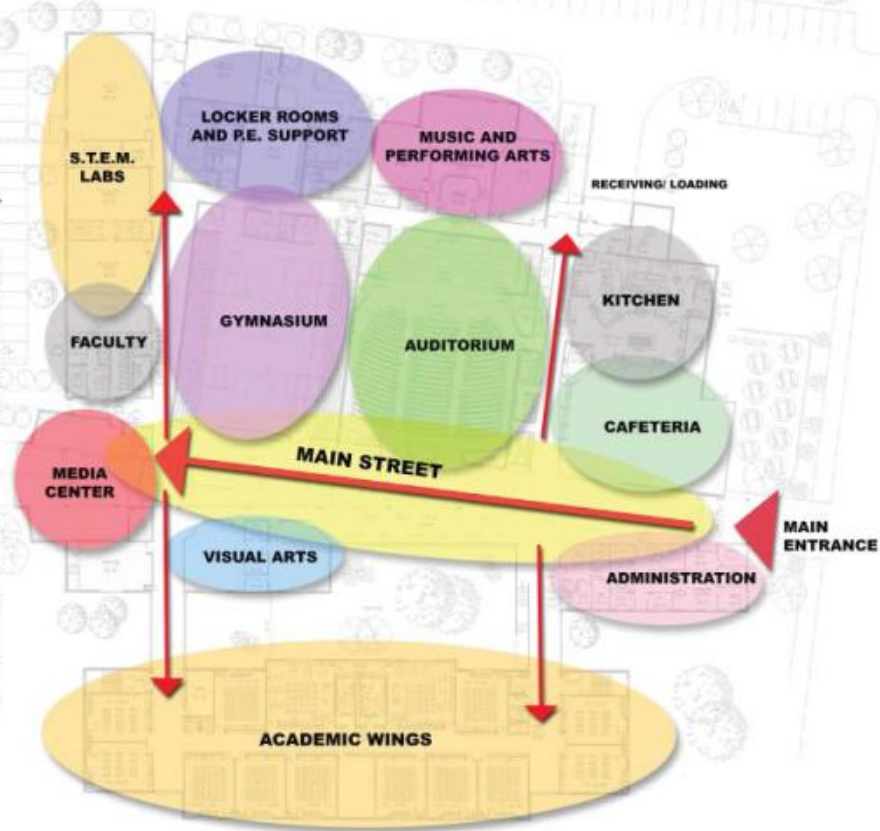
Process - Team

- CRA responsible to coordinate consultant efforts
- Establish clear line of communication

Educational Program

ASSEMBLY SPACES
ACCESSIBLE AFTER HOURS

ACADEMIC SPACES
ABILITY TO LOCK WINGS



DISCOVERY -

Develop understanding of your goals

- Identify key stakeholders among district staff
- Educational Program
- Information Gathering

VISIONING -

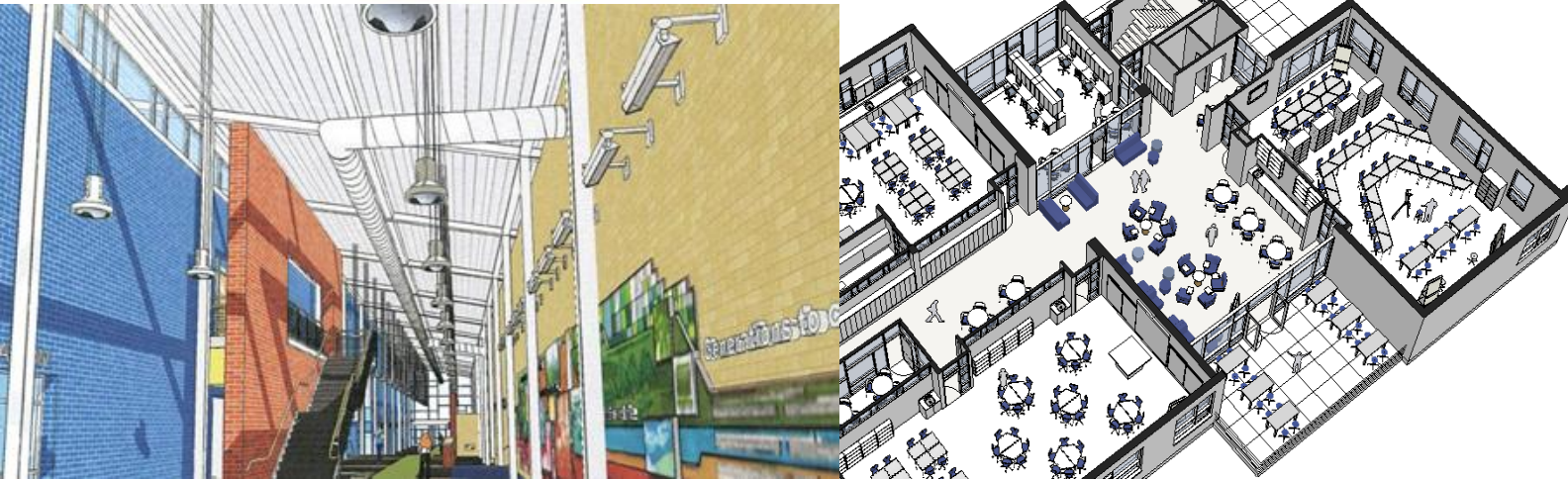
Establishing Guiding Principles

- What is your Educational Model for the Future
- What standards are important to implement
- 21st Century Learning Environments
- Equity

DESIGN -

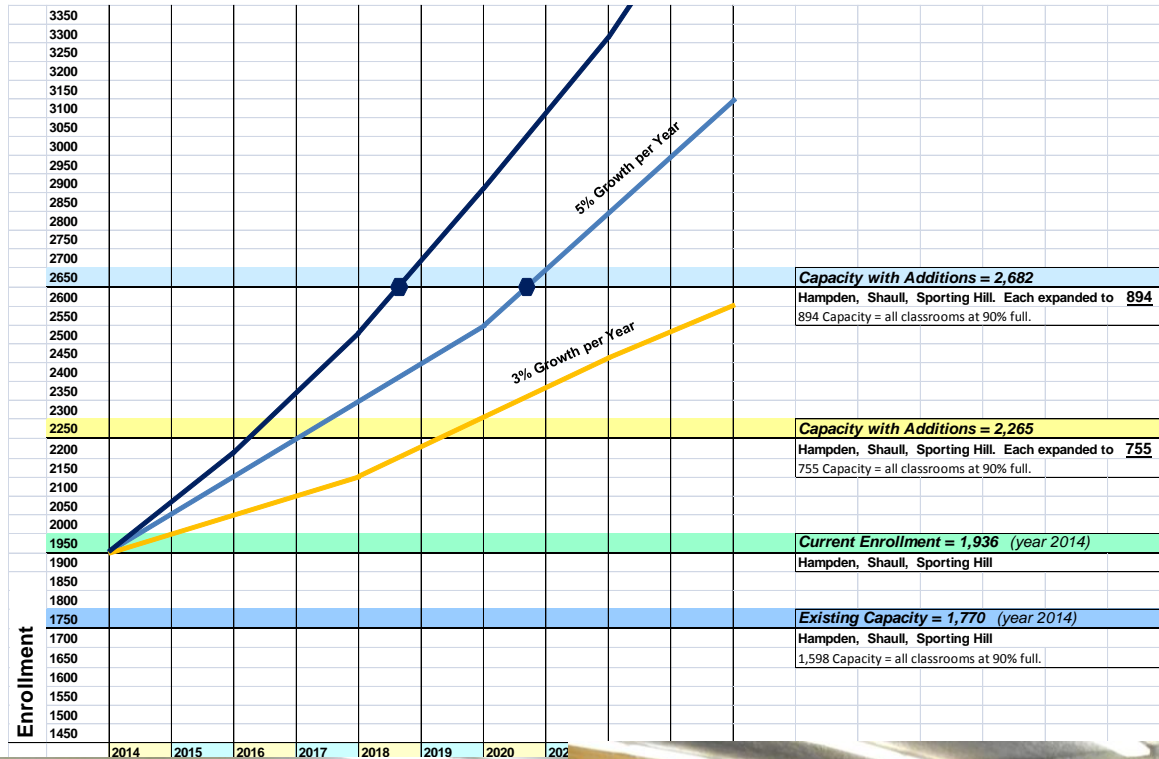
Translating Goals into ideas and strategies for facilities

- Collaboration
- Building Organization
- Floor plans , Furniture & equipment layouts



Updated PDE K 12

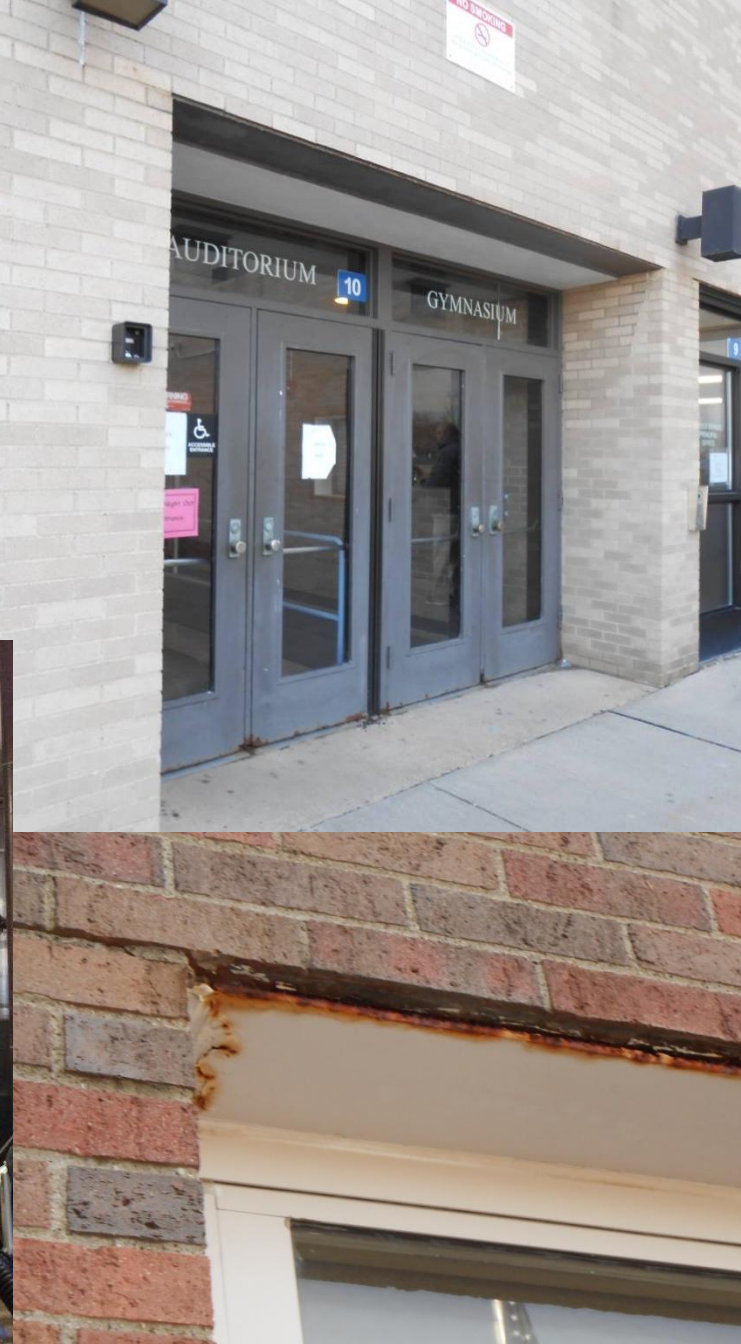
Demographics / Capacity



Demographics

- Report on Shell Development Meeting
 - RMU Economic Impact Study
- Review of Population & Growth
- PDE Projected Enrollment /Capacity
- Review of District prior study
- Develop understanding of current use of space

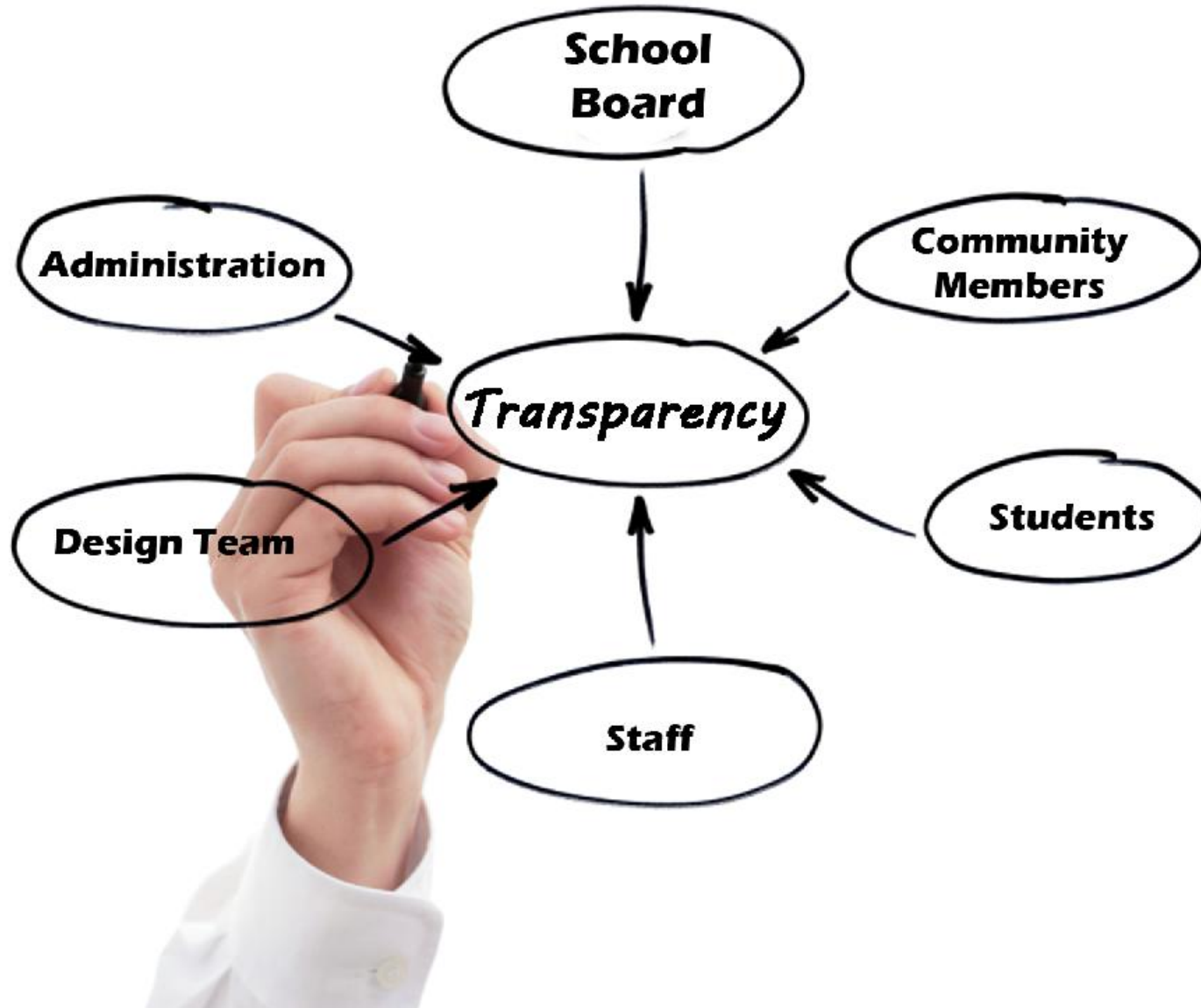




Building & Site Evaluations

- Review of Architectural, Mechanical, Electrical, Technology, Plumbing, Fire Protection Systems
 - Building Enclosure
 - Building Code Compliance / ADA
 - Define Desired vs. Required
 - Interior Environments
 - Life Cycle Cost Analysis – where are you now ?
 - Explore Buildable Areas
 - Site Improvements; Traffic, Storm water, Athletics

Committee Structure



- *Transparency*: Easy Access to Process
- **Define Committee Structure & Purpose**
 - Roles and responsibilities
 - Process for selection
 - Manageable size
 - Timing ; (Recommend end of August)
- Establish Community Partnerships
- Focus on Education / Fiscal Responsibility & avoid miscommunications

TASKS

Educational Programming

Existing Conditions Analysis

Option Development

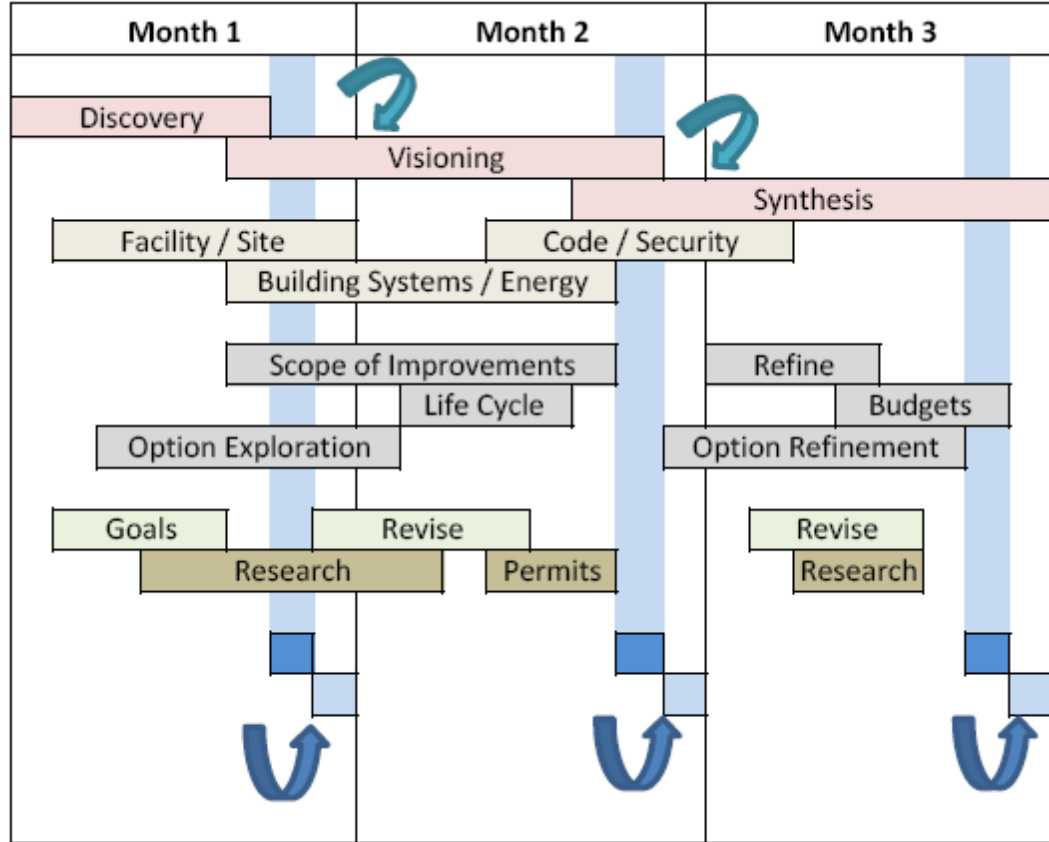
Sustainability

Land Development

Board Meetings

Community Engagement

Design



Schedule

- Summer Goals
 - Building and Site Assessments
 - Assemble committee structure
 - Begin discussing educational program
 - First Board report September



CENTRAL VALLEY
SCHOOL DISTRICT

Questions ?

CR

Providing a Client Oriented Approach to Architecture

Crabtree, Rohrbaugh & Associates, Architects